

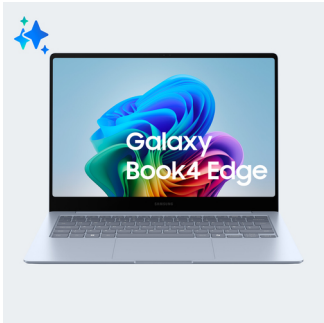
Samsung Galaxy Book4 Edge Laptop, Elite X, 16GB RAM, 512GB SSD, 14" Super AMOLED, Windows 11 Home, Sapphire Blue

Marchio : SamsungCodice prodotto: NP940XMA-KB1IT

Nome del prodotto : Samsung Galaxy Book4 Edge Laptop, Elite X, 16GB RAM, 512GB SSD, 14" Super AMOLED, Windows 11 Home, Sapphire Blue

- Processore potenziato dall'AI
- Copilot. Il tuo assistente personale
- Corpo in alluminio

Galaxy Book4 Edge (14", X Elite, 16GB), Copilot+ PC
Samsung Galaxy Book4 Edge Laptop, Elite X, 16GB RAM, 512GB SSD, 14" Super AMOLED, Windows 11 Home, Sapphire Blue. Tipo di prodotto: Computer portatile, Fattore di forma: Clamshell. Famiglia processore: Qualcomm Snapdragon. Dimensioni diagonale schermo: 35,6 cm (14"), Tipologia HD: WQXGA+, Risoluzione del display: 2880 x 1800 Pixel, Touch screen. RAM installata: 16 GB, Tipo di RAM: LPDDR5x-SDRAM. Capacità totale di archiviazione: 512 GB, Supporto di memoria: SSD. Sistema operativo incluso: Windows 11 Home. Colore del prodotto: Blu. Peso: 1,16 kg



Design		Audio	
Colour name	Sapphire Blue	Built-in microphone	✓
Product type *	Laptop	Camera	
Product colour *	Blue	Front camera	✓
Form factor *	Clamshell	Front camera resolution (numeric)	2 MP
Display		Network	
Display diagonal *	35.6 cm (14")	Top Wi-Fi standard *	Wi-Fi 7 (802.11be)
Display resolution *	2880 x 1800 pixels	Mobile network connection *	✗
Touchscreen *	✓	Bluetooth	✓
HD type	WQXGA+	Bluetooth version	5.3
Panel type	AMOLED	Ports & interfaces	
Display technology marketing name	Dynamic AMOLED 2X	USB 3.2 Gen 2 (3.1 Gen 2) Type-C ports quantity	2
Anti-glare screen	✓	HDMI ports quantity *	1
Maximum refresh rate	120 Hz	HDMI version	2.1
Processor		Combo headphone/mic port	✓
Processor manufacturer *	Qualcomm	Performance	
Processor family *	Qualcomm Snapdragon	Ambient light sensor	✓
Neural processor unit (NPU)		Keyboard	
Neural processor unit (NPU)	Qualcomm Hexagon	Pointing device	Clickpad
Memory		Numeric keypad *	✓
Internal memory *	16 GB	Keyboard backlit	✓
Internal memory type	LPDDR5x-SDRAM	Software	
Storage		Operating system installed *	Windows 11 Home
Total storage capacity *	512 GB	Battery	
Storage media *	SSD	Battery capacity *	55.9 Wh
Optical drive type *	✗		
Card reader integrated	✓		

Storage		Battery	
Compatible memory cards	MicroSD (TransFlash)	Battery life (max)	18 h
Graphics		Power	
Discrete graphics card model *	Not available	AC adapter power	65 W
On-board graphics card *	✓	Security	
Discrete graphics card *	✗	Fingerprint reader	✓
On-board graphics card family	Qualcomm Adreno	Trusted Platform Module (TPM)	✓
Audio		Weight & dimensions	
Audio system	Smart Amp	Width	312.3 mm
Number of built-in speakers	4	Depth	223.8 mm
		Height	10.9 mm
		Weight *	1.16 kg



8806095673042

Disclaimer. The information published here (the "Information") is based on sources that can be considered reliable, typically the manufacturer, but this Information is provided "AS IS" and without guarantee of correctness or completeness. The Information is only indicative and can be changed at any time without notification. No rights can be based on the Information. Suppliers or aggregators of this Information do not accept any liability with regard to the content of (web)pages and other documents, including its Information. The publisher of the Information can not be held liable for the content of 3rd party websites that are linking this Information or are linked to from this Information. You as the User of the Information are solely responsible for the choice and usage of this Information. You are not entitled to transfer, copy or otherwise multiply or distribute the Information. You are obliged to follow the directions of the copyright owner(s) with regard to the use of the Information. Exclusively Dutch law is applicable. With regard to price and stock data on the site, the publisher followed a number of starting points, which are not necessarily relevant for your private or business circumstances. Therefore, the price and stock data are only indicative and are subject to changes. You are personally responsible for the way you use and apply this information. As a user of the Information or sites or documents in which this Information is included, you will adhere to standard fair use including avoidance of spamming, ripping, intellectual-property violations, privacy violations, and any other illegal activity.

Publication date: 16-MAR-2025. Prints or copies of Information are only valid on the printed Publication date